



# SewaUK India COVID Appeal



**OXYGEN  
CONCENTRATORS**



**SUPPORT  
ORPHANAGES &  
ELDERLY HOMES**



**ESSENTIAL  
FAMILY KITS**

IN PARTNERSHIP WITH  
**Sewa International**





**As part of rehabilitation,  
we plan to ramp-up  
infrastructure of selected  
health care centers, which  
will benefit the  
community as a whole**

# How do you orchestrate and ensure the quality of procurement through suppliers and of supplies?

DISTRIBUTING  
EQUIPMENT TO 21  
NODAL CENTRES  
IN 16 STATES



## PROCUREMENT & SUPPLY TEAMS

- Sewa International Bharat has set-up a Steering committee comprising of doctors, interventionists, and disaster management experts, with core experience in dealing with the current situation and who are equipped to provide guidance on specifications of products to be procured, distribution channels and post disaster management and utilization.
  - Dr. Prasad Garimella (MD, Pulmonary Disease, Lawrenceville GA)
  - Dr. Anant Pandhare, (Medical Director, Dr. Hedgewar Hospital, Aurangabad),
  - Dr. Santosh Kraleti (CEO, Foot Soldiers for Health)
  - Dr. Satish Modh (Director, VESIM, Mumbai)
- Recipients include Government hospitals, Budget hospitals, Private hospitals, Charity-hospitals, Charity-run COVID care units and Isolation centers.



# What management systems do you have in place to keep a check on supplies received and distributed?

We have reach to every corner of the country



## PROCUREMENT & SUPPLY TEAMS

- We have a dedicated procurement and supply team.
- Disbursements are tracked internally via a Tracking Dashboard.
- Specific contact at State-level and end-locations are identified, who undertake proactive assessments of need as well as collect feedback requests from hospitals
- SIB has the reach to every corner of the country through various non-profits we work with. We always try to achieve the last mile connectivity in as many regions as possible.



**With the help of local communities, Sewa International have setup Community Kitchens serving fresh food to the covid warriors including police, health workers & sanitation workers**



## What areas of expertise is Sewa International Bharat delivering with on ground support?

### ON THE GROUND SUPPORT & EXPERTISE

Sewa International Bharat's expertise lies in responding to crisis/ disasters by collaborating with various non-profits and volunteers working on the ground. In this COVID situation we have also partnered with various non-profit organisations to set-up isolation centers, to test patients in remote villages, and set-up isolation centers in Tier 2 cities.

Sewa Aarogyam, our Mobile Health Van services continue to serve amid the second wave of the global pandemic and the lockdown. The team of our Doctors and supporting staff are providing affordable health services in the remote mountain region of Rudraprayag and Chamoli districts of Uttarakhand.



# What other services are being provided in addition to the distribution of equipment?

The breadth of service provides quick relief, and immediately impactful in saving lives and livelihoods. The depth of service ensures systematic strengthening, long-term sustainability while also providing an immediate layer of protection

## BREADTH OF PROVISION

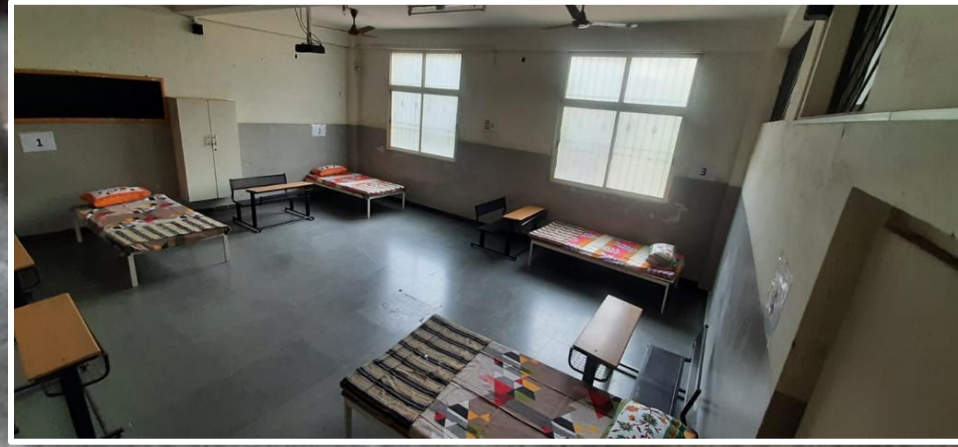
We are able to provide relief services in a number of ways:

- **Essential kits** with dry food, toiletries, sanitation products
- **Setting up of online helplines**, mental counselling services
- **Provision of critical medical equipment** such as Oxygen Concentrators, Covid Medicines, PPE Kits, N95 masks, BiPAP machines & Ventilators.
- **We are also supporting Covid Care/Isolation Centres** for mild-moderate Covid patients to ensure low-cost/prompt recovery of poor patients.





**We are supporting Covid Care/ Isolation Centres for mild-moderate Covid patients to ensure low-cost/ prompt recovery of poor patients**





# What will happen to excess stock supplied and how will it be accounted for?

## EQUIPMENT BANK

- A dedicated team is working on setting-up an Equipment Bank. The equipment purchased will be the asset of SIB.
- The Equipment Bank will provide additional equipment to the needy hospitals/medical centres for building long-term critical medical infrastructure capabilities based on local needs.
- SIB also plans to lend the items to needy health care units or individuals on need basis in case there is delay in identifying beneficiaries

## What is the ratio of supply to demand, how soon will the gap be closed and how is it assessed, managed and delivered?

## SUPPLY vs. DEMAND

- 6.9 lakh [100,000] patients, as reported on May 4\*, need oxygen and it is increasing
- As widely reported, there is no dearth of oxygen production. But there is a shortage in the delivery mechanism of oxygen as oxygen cylinders are limited in number. SIB are addressing this shortage through Oxygen Concentrators which can deliver required oxygen on premises without delivery issues.

\*Source: [Times of India](https://timesofindia.com)



# What about rehabilitation post the immediate emergency care?

## REHABILITATION

Our Rehabilitation programme is aimed at those who are suffered (directly) and affected (indirectly where the bread winner is the sufferer).

- **eMedical Center** (Direct Help): Provide medical guidance to the mild COVID affected patients
- **Counselling Centers** (Direct Help): Provide psychological counseling to the COVID affected persons
- **Education Aid** (Indirect Help): Provide education aid (school/college) to the children whose parents are affected by COVID and lost life/job.
- **Grief-Counselling Center** (Indirect Help): Provide counseling to family members who had lost their dear ones due to COVID.
- As a part of rehabilitation, we plan to ramp-up infrastructure of selected health care centers, which will benefit the community as a whole.





Please donate generously

<https://uk.virginmoneygiving.com/sewaukindiacovidappeal>

**Secondary Purpose on All Sewa UK Fundraising Campaigns:**

All funds will be used for Sewa UK's other projects and in line with its objectives after the primary purpose has been fulfilled to its best endeavours. This applies if Sewa UK or the fundraiser via our portal cannot achieve the intended purpose, or the amount raised is not enough or too much, Sewa UK will be able to use the donations straightaway for the secondary purpose.

Accordance with guidance: Fundraising Regulator

IN PARTNERSHIP WITH  
**Sewa International**

